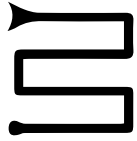


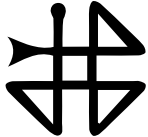
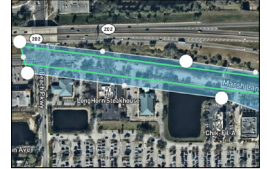
Explanation of Unmanned Aerial Vehicle (UAV) Flight Plans

UAVs are flown manually and are controlled by programs that fly the aircraft in specific patterns, and at rates of speed and altitudes in order to accurately capture images and data.



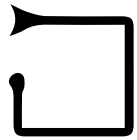
AREA SURVEYS

Produces high-resolution orthomosaics, digital elevation models and 3D point clouds.



CROSSHATCH SURVEYS

Automatically sets the drone camera at a 35-degree angle, enabling the capture of oblique imagery from four directions, producing detailed point clouds, and 3D meshes of vertical structures.



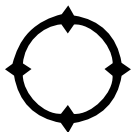
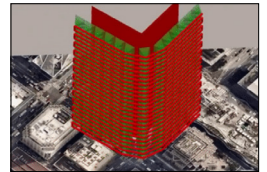
PERIMETER SCANS

Flies the UAV around facades and structures at multiple elevations, capturing vertical and oblique imagery perfect for creating detailed 3D models.



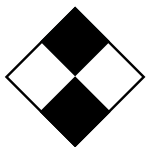
VERTICAL SCANS

Captures walls and facades to create rich point clouds, including steep mines and quarries, dams and towers. Used for quality control, planning, and progress monitoring of vertical and sloped structures and geography.



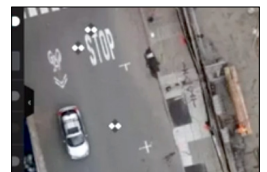
INSPECTIONS

Systematically takes high-resolution inspection photos for a closer look at structures and critical infrastructure, especially bridges.



GROUND CONTROL POINTS

Ground control points established on the job site and the coordinates are entered into the processing program to create accurate deliverables.



PART 107 LICENSED PILOTS • COMMERCIALY INSURED

4179 Davie Road • Suite 200 • Davie, FL 33314

o. 954.533.3194 • c. 954.647.3924 • www.SkyDataUAV.com • projects@SkyDataUAV.com